



## ETF Breakout Alert: Large-Cap Sector ETFs - 5/30/2025

The ETF Breakout report highlights ETFs that are exhibiting upside momentum using a variety of price strength statistics. The report looks for a series of signs that an ETF is breaking out including its standalone price trend and its momentum relative to other ETFs in its category.

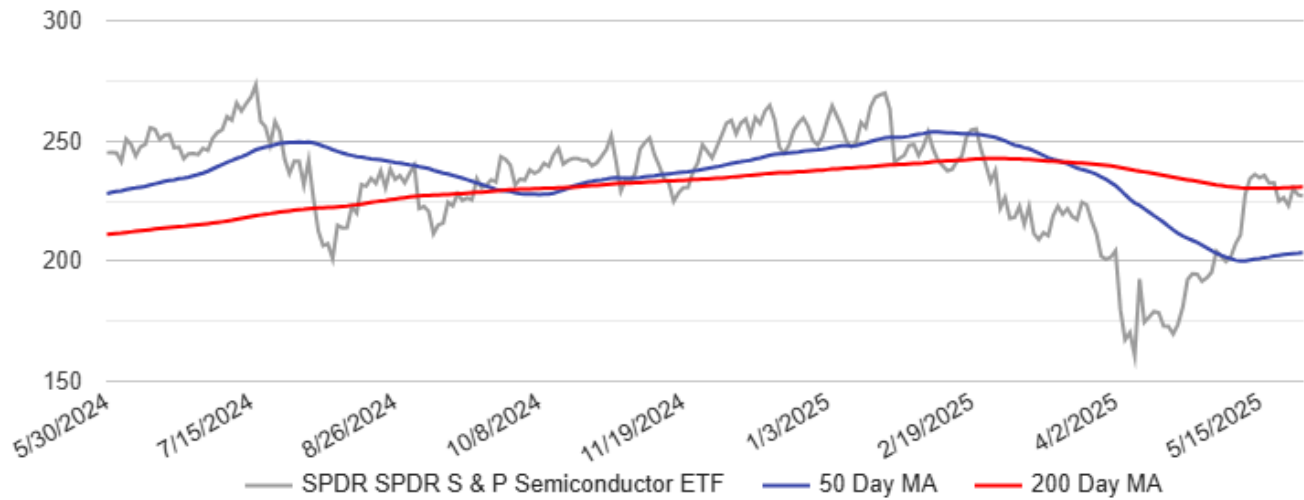
### Today's Newly Issued Alerts:

- SPDR SPDR S & P Semiconductor ETF (XSD)
- VanEck Semiconductor ETF (SMH)
- Invesco PHLX Semiconductor ETF (SOXQ)

#### SPDR SPDR S & P Semiconductor ETF (XSD)

Full Factor Report

- XSD is up 18.53% in the past month vs. 5.21% for the average Large-Cap Multi-Factor ETF.
- It is currently 11.60% above its 50-day moving average.



**ETF Profile:** The investment seeks capital appreciation through short sales of domestically traded equity securities. The Sub-Advisor seeks to achieve the fund's investment objective by short selling a portfolio of liquid mid- and large-cap U.S. exchange-traded equity securities, ETFs, ETNs, and other exchange-traded products. The fund invests at least 80% of its net assets plus any borrowings for investment purposes in short positions in equity securities. The Sub-Advisor implements a bottom-up fundamental research-driven security selection process.

#### ETF SUMMARY

Issuer:	State Street
Price:	\$227.04
Total Assets:	\$1,549,092,000
Number of Holdings:	40
Expense Ratio:	0.35%
Active Share:	93.30%

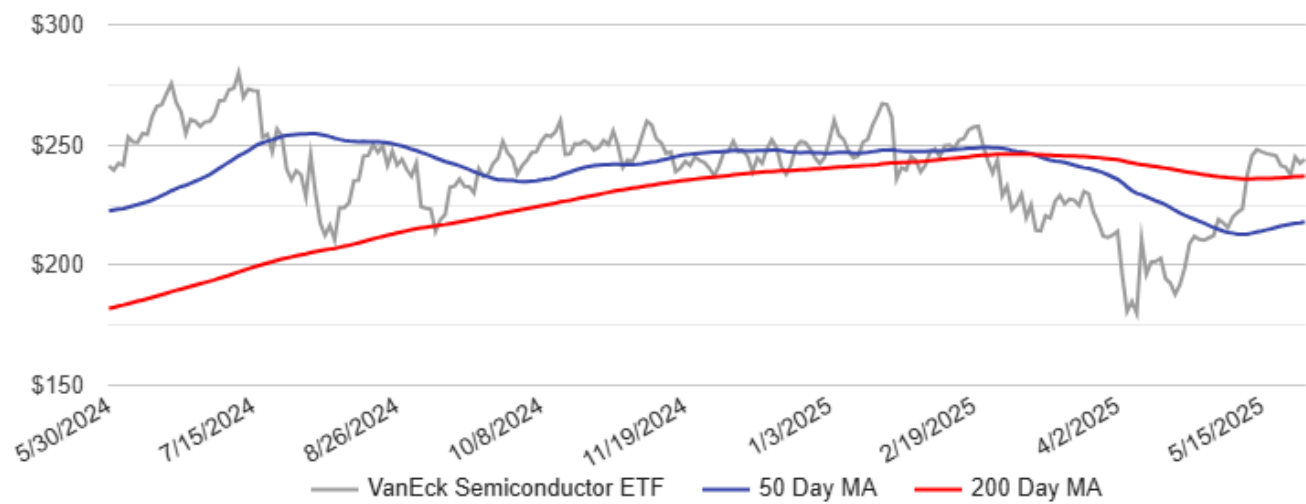
#### TREND DATA

One Year Return:	-6.9%
Three Month Return:	2.2%
One Month Return:	18.5%
Percent Below One Year High:	16.96%
Percent Above (Below) 50 Day Moving Average:	11.60%
Percent Above (Below) 200 Day Moving Average:	-1.65%

VanEck Semiconductor ETF (SMH)

Full Factor Report

- SMH is up 16.07% in the past month vs. 5.21% for the average Large-Cap Quality ETF.
- It is currently 11.97% above its 50 day moving average.



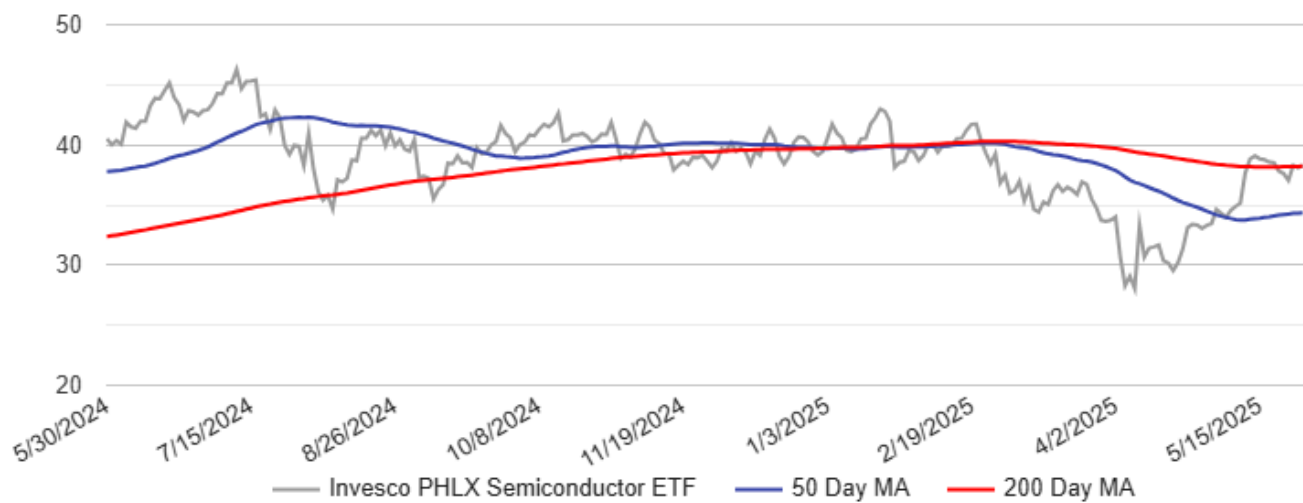
**ETF Profile:** The investment seeks to replicate as closely as possible before fees and expenses the price and yield performance of the MVIS US Listed Semiconductor 25 Index. The fund normally invests at least 80% of its total assets in securities that comprise the fund s benchmark index. The index includes common stocks and depositary receipts of U.S. exchange-listed companies in the semiconductor industry. Such companies may include medium-capitalization companies and foreign companies that are listed on a U.S. exchange. The fund is non-diversified.

ETF SUMMARY		TREND DATA	
Issuer:	VanEck	One Year Return:	-0.2%
Price:	\$244.08	Three Month Return:	6.7%
Total Assets:	\$22,364,290,000	One Month Return:	16.1%
Number of Holdings:	27	Percent Below One Year High:	12.84%
Expense Ratio:	0.35%	Percent Above (Below) 50 Day Moving Average:	11.97%
Active Share:	89.87%	Percent Above (Below) 200 Day Moving Average:	3.02%

Invesco PHLX Semiconductor ETF (SOXQ)

Full Factor Report

- SOXQ is up 15.89% in the past month vs. 5.21% for the average Large-Cap Quality ETF.
- It is currently 11.41% above its 50 day moving average.
- Its price recently broken above its 200-day moving average, which indicates a positive price trend.



**ETF Profile:** The Invesco PHLX Semiconductor ETF is an exchange traded fund incorporated in the USA. The Fund generally will invest at least 90% of its total assets in the securities that comprise the Underlying Index Philadelphia Stock Exchange Semiconductor Index.

ETF SUMMARY		TREND DATA	
Issuer:	Invesco	One Year Return:	-6.3%
Price:	\$38.29	Three Month Return:	3.9%
Total Assets:	\$361,729,200	One Month Return:	15.9%
Number of Holdings:	30	Percent Below One Year High:	17.28%
Expense Ratio:	0.19%	Percent Above (Below) 50 Day Moving Average:	11.41%
Active Share:	90.16%	Percent Above (Below) 200 Day Moving Average:	0.19%

\* Validea is a research provider offering analysis of ETFs using quantitative models. All trademarks, service marks and tradenames appearing in this email are the property of their respective owners, and are likewise used for identification purposes only. Investing in the stock market involves risk, including the risk of principal loss. Information in this email is in no way intended as personalized investment advice and should not be interpreted as such.

This communication is issued by Validea and/or affiliates of Validea. This is not a personal recommendation, nor an offer to buy or sell nor a solicitation to buy or sell any securities, investment products or other financial instruments or services. This material is distributed for general informational and educational purposes only and is not intended to constitute legal, tax, accounting or investment advice.

The statements in this document shall not be considered as an objective or independent explanation of the matters. Please note that this document (a) has not been prepared in accordance with legal requirements designed to promote the independence of investment research, and (b) is not subject to any prohibition on dealing ahead of the dissemination or publication of investment research.

Validea 2025. All rights reserved.

Intended for recipient only and not for further distribution without the consent of Validea.